

icg

### 3.5 ADAPTOR and REDUCER

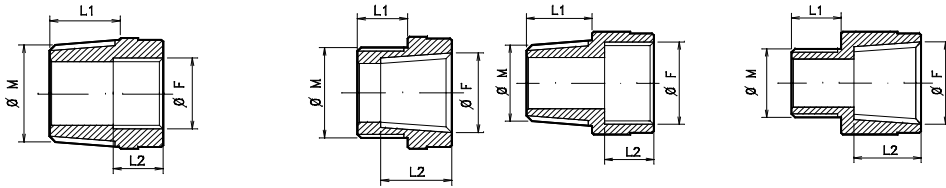


#### 3.5a A series

M/F thread adaptor: M and F different thread

Adaptor type **A xa yb**

A = Adaptor  
x = M thread type  
a = M thread size  
y = F thread type  
b = F thread size

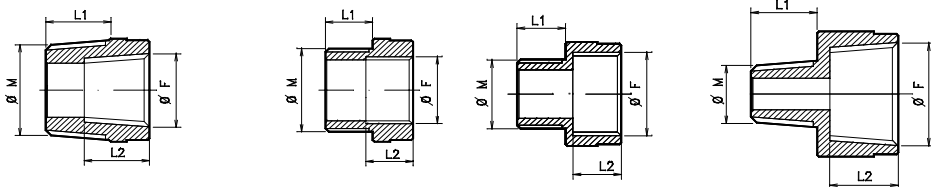


#### 3.5b A series

M/F thread reducer: M and F same thread

Reducer type **R xa yb**

R = reducer  
x = M thread type  
a = M thread size  
y = F thread type  
b = F thread size



icg

### 3.5c AM / RM series

M/M thread adaptor/reducer: M and M same thread

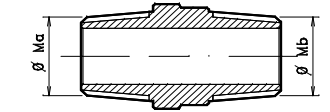
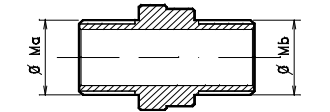
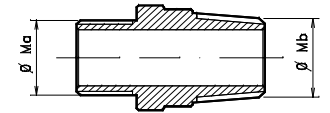
Adaptor type **AM xa yb**

AM = adaptor  
x = M thread type  
a = M thread size  
y = M thread type  
b = M thread size



Reducer type **RM xa yb**

RM = reducer  
x = M thread type  
a = M thread size  
y = M thread type  
b = M thread size

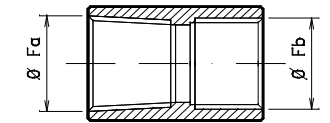


### 3.5d Serie AF / RF

F/F thread adaptor/reducer: F and F same thread

Adaptor type **AF xa yb**

AF = adaptor  
x = F thread type  
a = F thread size  
y = F thread type  
b = F thread size



Reducer type **RF xa yb**

RF = reducer  
x = F thread type  
a = F thread size  
y = F thread type  
b = F thread size

