

3.1e CABLE GLAND - DALD series

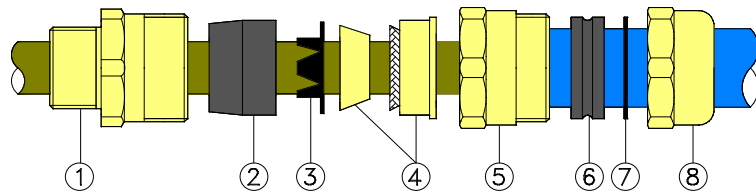


CHARACTERISTICS: For armoured and lead sheathed cable, inner and outer seals, armour and lead grounding.

APPLICATION: For outdoors with complete protection of cable armour.

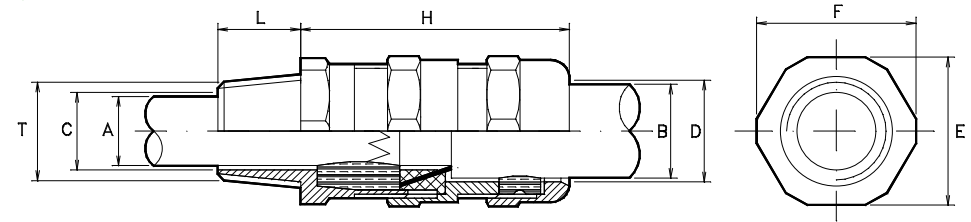
PROTECTION DEGREE: IP66.

REFERENCE E
DALD FOR ARMURED CABLE AND LEAD SHEATHED CABLE



- 1 - Body
- 2 - Inner seal
- 3 - Lead ring
- 4 - Armour clamping ring
- 5 - Middle body
- 6 - Outer seal
- 7 - Washer
- 8 - Gland nut

→Sample of designation: **DALD1.1015 M20x1,5**



L=Thread length: see comparison table

SIZE	Thread T	Cable dimension TYPE	A		B		C	D	H	E	F
			min	max	min	max					
1	1/2"NPT - M20x1,5 - Pg13,5 3/4"NPT - M25x1,5 - Pg16	DALD1.8*	4,5	6	10 14	15 19	14	20	65	32	35
		DALD1.10*	6	8,5							
		DALD1.13*	8,5	11							
2	3/4"NPT - M25x1,5 - Pg16	DALD2.13*	8,5	11	15 19	20 24	19	25	65	36	39
		DALD2.15*	11	13,5							
		DALD2.18*	13,5	16							
3	1"NPT - M32x1,5 - Pg21	DALD3.18*	13	16	20 25	26 31	25	32	82	45	49
		DALD3.21*	16	19							
		DALD3.24*	19	22							
4	1 1/4"NPT - M40x1,5 - Pg29	DALD4.24*	19	22	26 31	32 37	31	38	83	50	55
		DALD4.27*	22	25							
		DALD4.30*	25	28							
5	1 1/2"NPT - M50x1,5 - Pg36	DALD5.27*	22	25	31 36	37 43	37	44	83	57	62
		DALD5.30*	25	28							
		DALD5.33*	28	30							
		DALD5.36*	31	34							
6	2"NPT - M63x1,5 - Pg42	DALD6.39*	34	37	42 47	48 53	47	54	83	67	73
		DALD6.42*	37	40							
		DALD6.45*	40	43							
7	2 1/2"NPT - M75x1,5 - Pg48	DALD7.48*	43	46	52 58	58 64	57	65	83	80	88
		DALD7.51*	46	49							
		DALD7.54*	49	52							